

PORT
DE



Bellerive

PLANS — VILLA 3

PLAN DE MASSE

VILLA 3

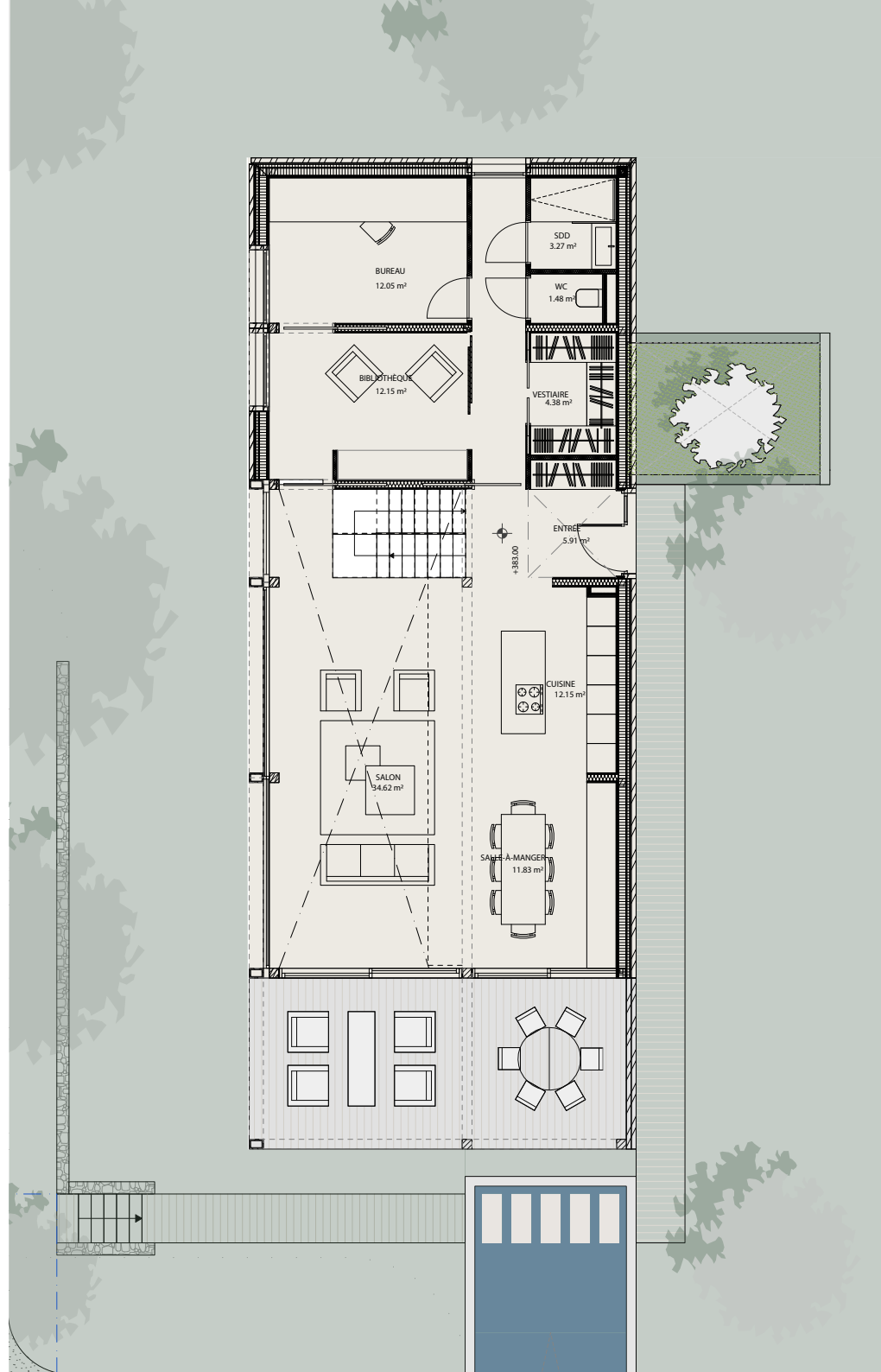
| | |
|--------------------|----------------------|
| Parcelle | 870.6 m ² |
| Niveaux | 3 |
| Surface utile int. | 321.3 m ² |
| Surface habitable | 231.3 m ² |
| Sous-sol | 169.7 m ² |
| Balcon | 11.7 m ² |
| Terrasse | 26.9 m ² |
| Jardin | 462.2 m ² |
| Parkings couverts | 2 |



REZ-DE- JARDIN

VILLA 3

| | |
|---------------|----------------------|
| Surface utile | 106.5 m ² |
| Terrasse | 26.9 m ² |
| Jardin | 462.2 m ² |

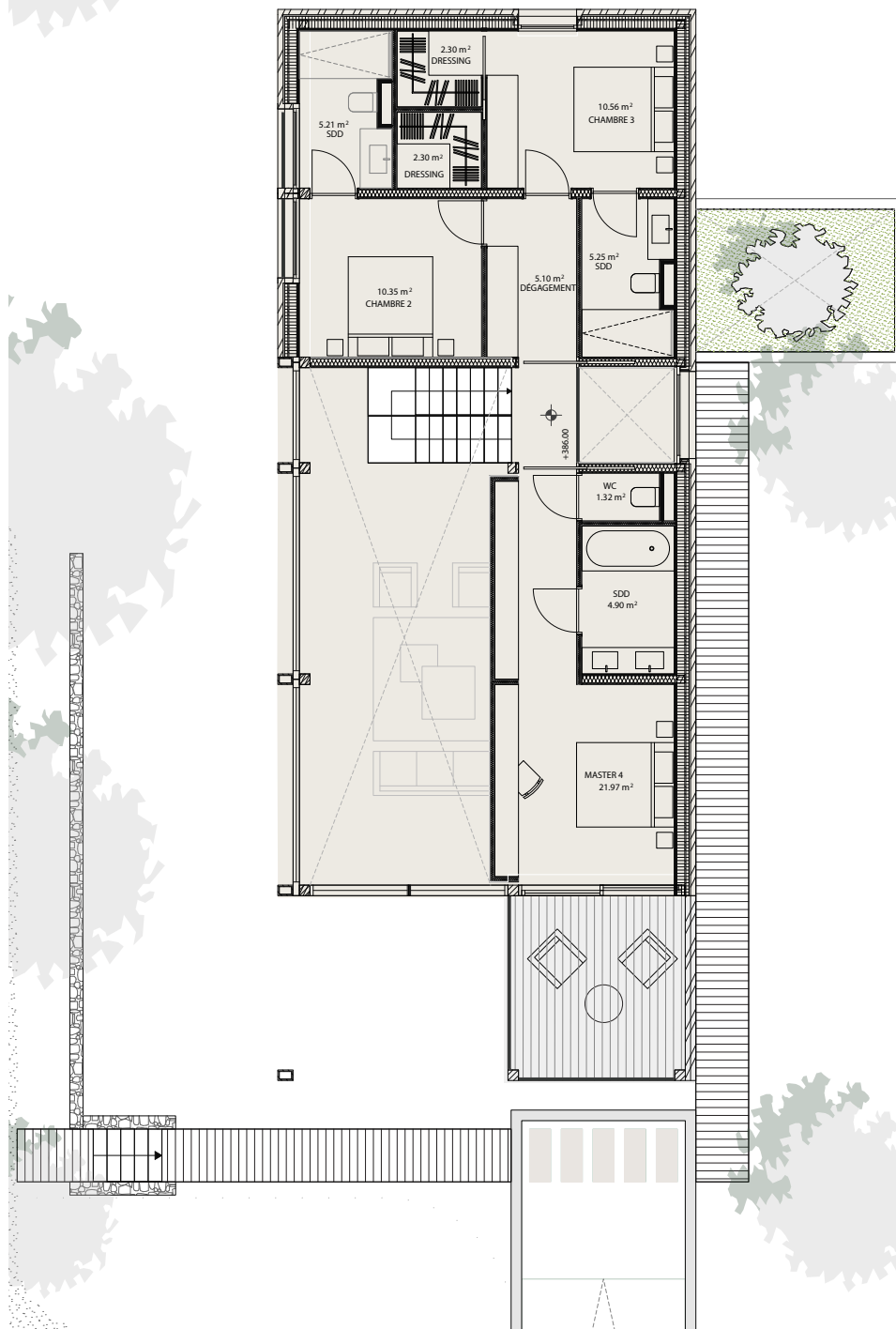


ÉTAGE

VILLA 3

Surface utile
Balcon

69 m²
11.7 m²

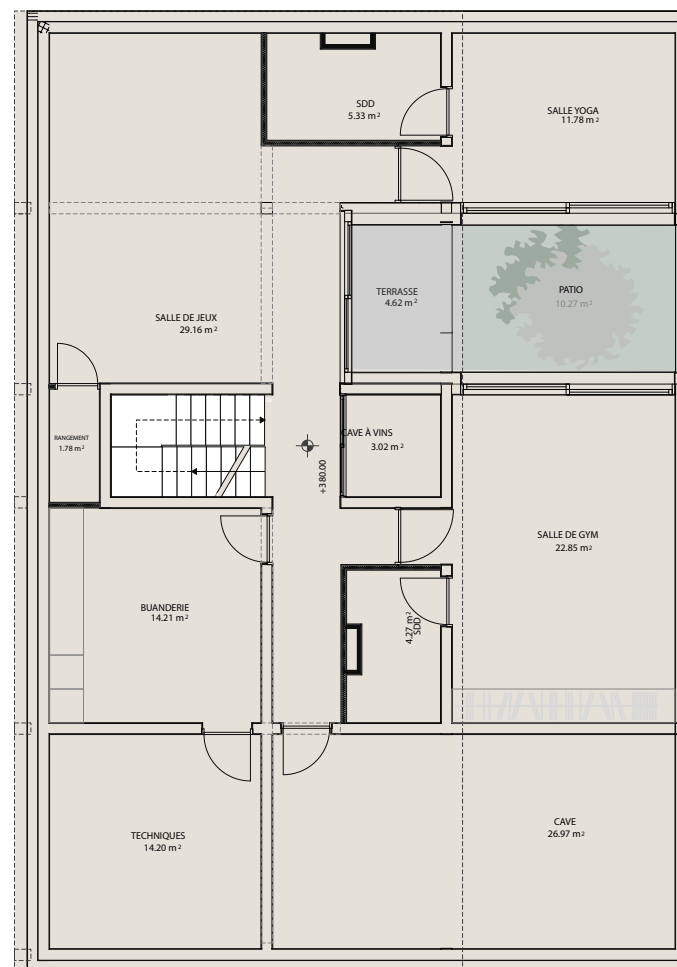


REZ INFÉRIEUR

AVEC LUMIÈRE NATURELLE

VILLA 3

| | |
|---------------|----------------------|
| Surface utile | 145.7 m ² |
| Terrasse | 6.3 m ² |
| Patio | 10.9 m ² |



PORT
DE



Bellerive

COMMERCIALISATION



BUREAU D'ARCHITECTE

Favre+Guth



www.port-bellerive.ch

Naef Prestige | Knight Frank
Route de Florissant 57, 1206 Genève
+41 (0)22 839 39 60
geneva@naefprestige-knightfrank.ch